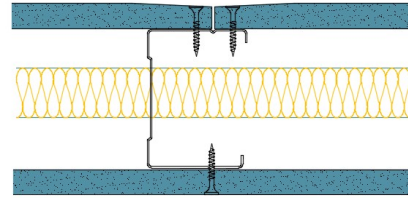


AS70-B-153(25) - SPEEDLINE System Data Sheet - Version V1 (24-10-23)

SPEEDLINE 70mm Acoustic 'C' Stud Partition
 @600mm Ctrs, with BG Gyproc 12.5mm
 SoundBloc each side, 25mm APR



System Performance Breakdown

Fire Resistance:

BS476 Part 22:1987:

Test Ref & Date or Applied Ref & Report:

Max Height:

Thickness:

Duty Grade: BS 5234: Part 2:1992:

Sound Insulation:

30/30 Minutes (Integrity/Insulation).

BTC 17439F - BRE Report P102396-1011A

Refer to Speedline Specification Clause

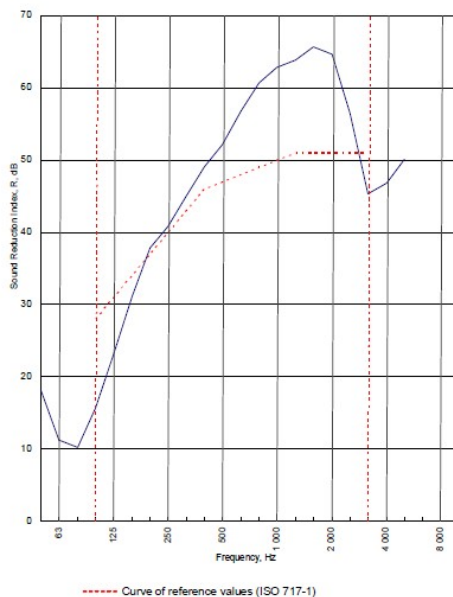
97 mm. (At Base Track, Excluding Finishes)

Medium - Annexes A-F

47 R_w dB, Date Tested or Assessed Against - 30/06/2011

Test Code:
H17458AA
 Test Date:
30/06/2011

Freq. Hz	R dB
50	18.1
63	11.2
80	10.2
100	15.6
125	23.1
160	31.1
200	37.8
250	40.8
315	45.1
400	49.1
500	52.2
630	56.8
800	60.7
1 000	62.9
1 250	63.9
1 600	65.7
2 000	64.7
2 500	56.5
3 150	45.3
4 000	46.8
5 000	50.1
6 300	
8 000	
10 000	



Rating according to **BS EN ISO 717-1:1997**
 R_w (C;Ctr) = 47 (-5;-12) dB
 Max dev. 12.4 dB at 100 Hz
 Evaluation based on laboratory measurement results obtained by an engineering method

C_{50-100} = -8 dB	$C_{100-500}$ = -7 dB	$C_{100-2000}$ = -4 dB
$C_{125-250}$ = -19 dB	$C_{250-500}$ = -19 dB	$C_{100-8000}$ = -12 dB

TESTED AT ONE OF THE UKAS ACCREDITED LABORATORIES BELOW

- B.T.C (H-Ref on Graph)
- B.R.E
- AIRO
- S.R.L
-

Customer: **Metsec plc Hepsec Division**

BTC 17458A: Page 9 of 11

